



**REGIONAL SPECIALISED METEOROLOGICAL CENTRE-TROPICAL CYCLONES, NEW DELHI  
SPECIAL TROPICAL WEATHER OUTLOOK**

**DEMS-RSMC TROPICAL CYCLONES NEW DELHI DATED 15.07.2025**

**SPECIAL TROPICAL WEATHER OUTLOOK FOR NORTH INDIAN OCEAN (THE BAY OF BENGAL AND THE ARABIAN SEA) VALID FOR NEXT 168 HOURS ISSUED AT 0845 UTC OF 15.07.2025 BASED ON 0600 UTC OF 15.07.2025.**

**SUB: (A) WELL MARKED LOW PRESSURE AREA OVER NORTH JHARKHAND AND ADJOINING SOUTH BIHAR  
(B) DEPRESSION OVER CENTRAL PARTS OF NORTH RAJASTHAN**

**(A) WELL MARKED LOW PRESSURE AREA OVER NORTH JHARKHAND AND ADJOINING SOUTH BIHAR**

THE WELL MARKED LOW PRESSURE AREA OVER NORTH JHARKHAND AND ADJOINING SOUTH BIHAR PERSISTED OVER THE SAME REGION AT 0600 UTC OF TODAY, THE 15<sup>TH</sup> JULY 2025.

IT IS LIKELY TO MOVE FURTHER WEST-NORTHWESTWARDS ACROSS JHARKHAND AND ADJOINING SOUTH BIHAR TOWARDS EAST UTTAR PRADESH DURING NEXT 24 HOURS. HOWEVER, THE SYSTEM IS UNDER CONTINUOUS MONITORING FOR POSSIBLE RE-INTENSIFICATION.

AS PER INSAT 3DS IMAGERY, AT 0600 UTC OF 15<sup>TH</sup> JULY 2025 SCATTERED TO BROKEN LOW/MEDIUM CLOUDS WITH EMBEDDED INTENSE TO VERY INTENSE CONVECTION OVER BIHAR JHARKHAND CHHATTISGARH ODISHA GANGETIC WEST BENGAL SUB HIMALAYAN WEST BENGAL SIKKIM BANGLADESH EAST MADHYA PRADESH NORTHEASTERN STATES AND NORTH BAY OF BENGAL AND MODERATE TO INTENSE CONVECTION OVER EAST UTTAR PRADESH NORTH SUB HIMALAYAN WEST BENGAL WEST MEHGALAYA ADJOINING ESTW ASSAM (MINIMUM CLOUD TOP TEMPERATURE IS 70-90 °C).

## **(B) DEPRESSION OVER CENTRAL PARTS OF NORTH RAJASTHAN**

THE DEPRESSION OVER CENTRAL PARTS OF NORTH RAJASTHAN MOVED SLOWLY WEST-NORTHWESTWARDS AND LAY CENTERED AT 0600 UTC OF TODAY, THE 15TH JULY, 2025 OVER THE SAME REGION NEAR LATITUDE 27.7<sup>0</sup>N AND LONGITUDE 75.0<sup>0</sup>E ABOUT 20 KM NORTHWEST OF SIKAR AND 60 KM SOUTH OF CHURU.

IT IS LIKELY TO CONTINUE TO MOVE SLOWLY WEST-NORTHWESTWARDS ACROSS NORTH RAJASTHAN DURING NEXT 24 HOURS.

AS PER INSAT 3DR IMAGERY, AT 0600 UTC OF 15<sup>th</sup> JULY 2025 SCATTERED TO BROKEN LOW/MEDIUM CLOUDS WITH EMBEDDED INTENSE TO VERY INTENSE CONVECTION OVER NORTH RAJASTHAN (MINIMUM CLOUD TOP TEMPERATURE IS 70-90 °C) AND MODERATE TO INTENSE CONVECTION OVER EAST PUNJAB WEST HARYANA (MINIMUM CLOUD TOP TEMPERATURE IS 50-60 °C)

### **WARNINGS:**

#### **WIND WARNING:**

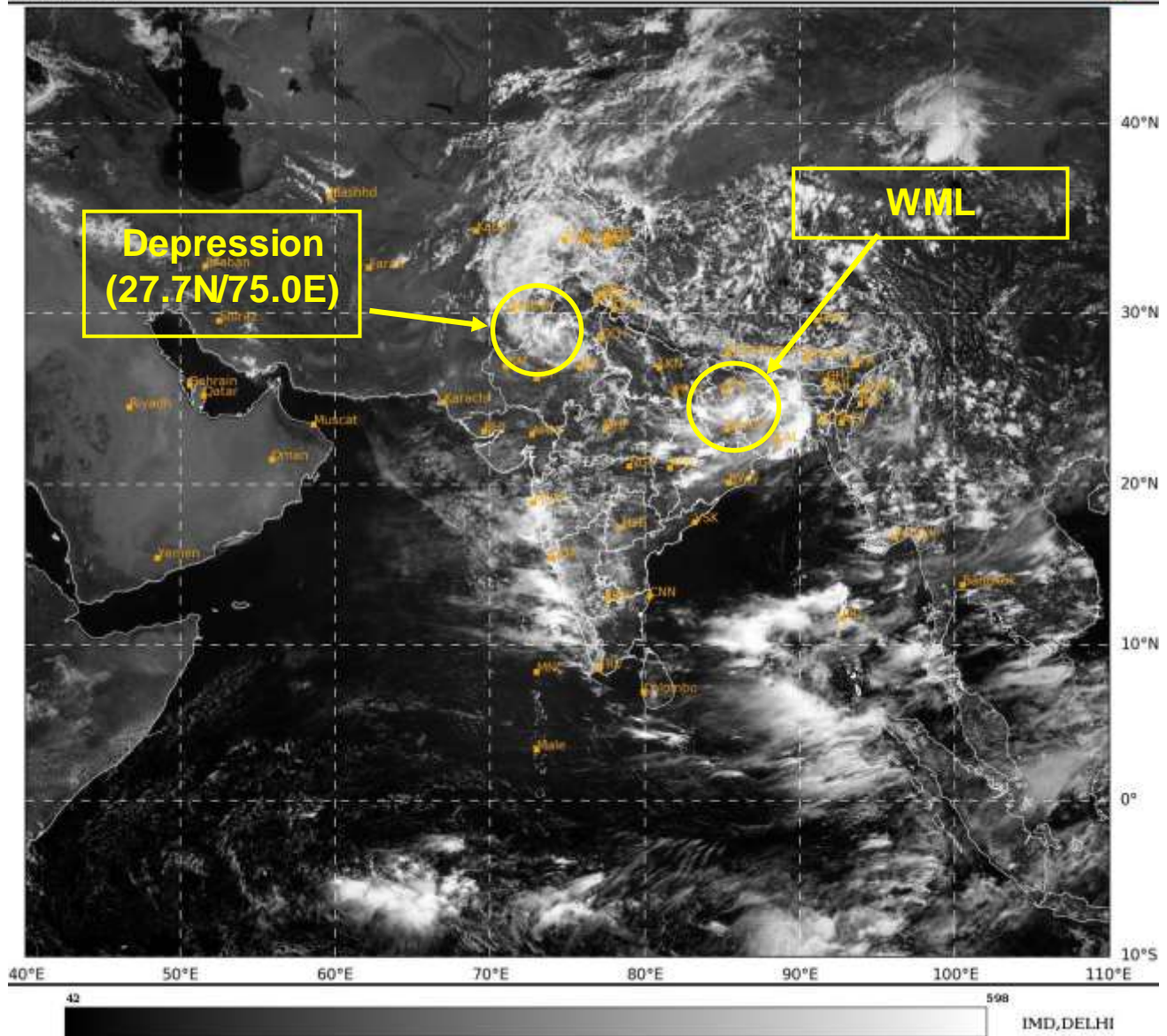
- SQUALLY WIND SPEED REACHING 40-50 KMPH GUSTING TO 60 KMPH IS LIKELY TO PREVAIL OVER NORTH RAJASTHAN AND ADJOINING HARYANA & NORTHWEST MADHYA PRADESH FOR NEXT 24 HOURS, AND OVER NORTHWEST RAJASTHAN & NEIGHBOURHOOD FOR SUBSEQUENT 24 HOUR.
- SQUALLY WIND SPEED REACHING 30-40 KMPH GUSTING TO 50 KMPH IS LIKELY OVER BIHAR, JHARKHAND, NORTH CHHATTISGARH, NORTH ODISHA AND ADJOINING GANGETIC WEST BENGAL DURING NEXT 24 HOURS.

**REMARKS :** UNDER THE INTERACTION OF MIDDLE TROPOSPHERIC WESTERLY TROUGH WITH THE WELL MARKED LOW PRESSURE AREA OVER CENTRAL PARTS OF NORTH RAJASTHAN, THE SYSTEM HAS INTENSIFIED INTO A DEPRESSION AT 0300 UTC OF TODAY, THE 15<sup>TH</sup> JULY OVER THE SAME REGION.

**(D R PATTANAIK)**  
HEAD RSMC, NEW DELHI

SAT : INSAT-3DR IMG  
Visible Count 0.65 um  
LIC Mercator

15-07-2025/(0715 to 0742) GMT  
15-07-2025/(1245 to 1312) IST



WML – Well Marked Low Pressure Area





## OBSERVED TRACK OF DEPRESSION OVER SOUTHEAST GANGETIC WEST BENGAL AND ADJOINING BANGLADESH DURING 14 - 15<sup>th</sup> JULY 2025



DATE/TIME : IN UTC  
IST : UTC + 0530  
KT : NAUTICAL MILE S/HOUR = 1.85 KM/HOUR  
LPA : LOW PRESSURE AREA  
WML : WELL MARKED LOW PRESSURE AREA  
D : DEPRESSION (17-27 KT)  
DD : DEEP DEPRESSION (28-33 KT)  
CS : CYCLONIC STORM (34-47 KT)  
SCS : SEVERE CYCLONIC STORM (48-63 KT)  
VSCS : VERY SEVERE CYCLONIC STORM (64-89 KT)  
ECS : EXTREMELY SEVERE CYCLONIC STORM (90-119 KT)  
SuCS : SUPER CYCLONIC STORM ( $\geq 120$  KT)

● LESS THAN 34 KT  
⤵ 34-47 KT  
⤵  $\geq 48$  KT  
— OBSERVED TRACK  
— FORECAST TRACK  
▲ CONE OF UNCERTAINTY



## OBSERVED AND FORECAST TRACK OF DEPRESSION OVER CENTRAL PARTS OF NORTH RAJASTHAN AT 0600 UTC (1130 Hrs. IST) OF 15<sup>th</sup> JULY 2025



DATE/TIME IN UTC  
IST=UTC + 0530  
L: LOW PRESSURE AREA  
WML: WELL MARKED LOW PRESSURE AREA  
D: DEPRESSION (17-27 KT)  
DD: DEEP DEPRESSION (28-33 KT)  
CS: CYCLONIC STORM (34-47 KT)  
SCS: SEVERE CYCLONIC STORM (48-63KT)  
VSCS: VERY SEVERE CYCLONIC STORM (64-89 KT)  
ESCS: EXTREMELY SEVERE CYCLONIC STORM (90-119 KT)  
SuCS: SUPER CYCLONIC STORM ( $\geq 120$  KT)

1KT=1.85 KMPH

- LESS THAN 34 KT
- 34-47 KT
- $\geq 48$  KT
- OBSERVED TRACK
- FORECAST TRACK
- CONE OF UNCERTAINTY



### Fishermen Warning Graphics

